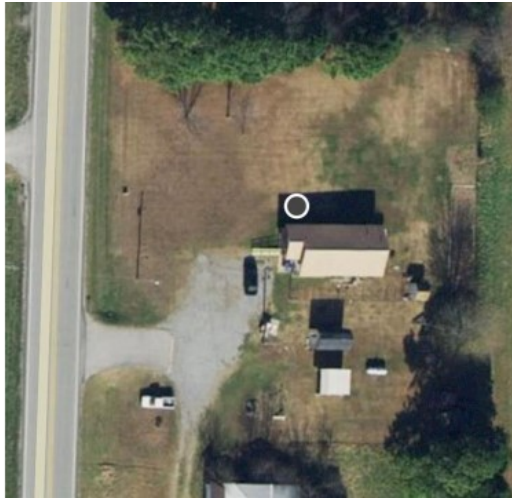


9664 279 Highway

Bentonville, Ar 72719



List Price: \$350,000
MLS#: 1259866
Beds: 2
Baths Full: 1
Garage: 0
Square Feet: 836
Price / Square Foot: \$418.66
Subdivision: none
Type: Residential
County: Benton
School: Bentonville

Description

1 Acre fronts on Hwy 279 North. adjoins MLS#1240334 Commercial potential and backs up to a 5.71 acre tract for sale! This is 1 Acre cleared tract with home, on busy road. Great potential for commercial or residential development. Minutes from XNA regional airport. City water, septic, and electric on site and at corner.

Property Details

Lot Size	1.00 Acres
Air Condition	CentralAir
Amenities	None
Appliances	ElectricWaterHeater,NoHotWater
Exterior	Other,SeeRemarks
Fencing	None
Listed By	Crye-Leike Realtors - Bentonville