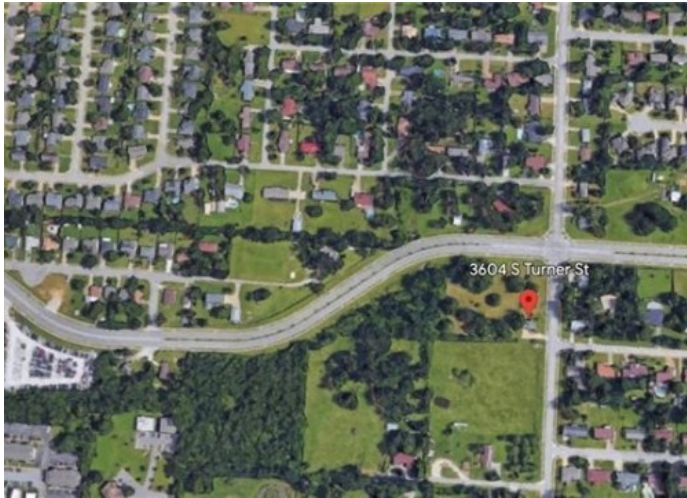


## 3604 S Turner Street

Springdale, Ar 72764



**List Price:** \$861,750

**MLS#:** 1267569

**Beds:** 0

**Garage:** 0

**Subdivision:** Springdale Outlots

**Type:** Land

**County:** Washington

**School:** Springdale

### Description

Great location and potential for commercial and/or residential development on the corner of Don Tyson Parkway and South Turner Street. Perfect location for a shopping center, restaurant, car wash or bank. Located just minutes from Tyson Home Office, Highway 265, and Interstate 49.

### Property Details

Lot Size	3.92 Acres
Fencing	None,Partial
Listed By	Elite Realty