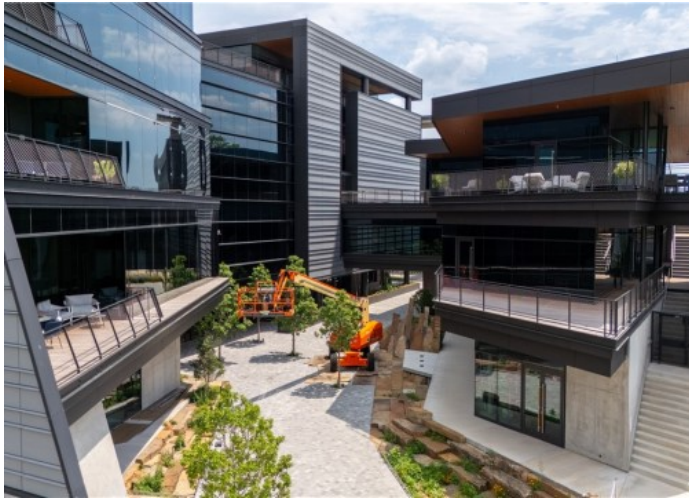


215 NW A Street

Bentonville, Ar 72712



List Price: \$43
MLS#: 1291893
Beds: 0
Garage: 0
Square Feet: 35,388
Price / Square Foot: \$0.00
Type: CommercialLease
Built: 2023
County: Benton
School:

Description

Welcome to Midtown Lane, Bentonville's premier 175,000 SF mixed-use building in the heart of downtown. Designed with bold architecture and high-end finishes, this Class "A" property offers an unparalleled blend of world-class design and local charm. The ground floor features retail spaces with patios, while the upper floors boast office spaces with balconies, combining indoor luxury with outdoor appeal. Located just steps from the Bentonville Square, Midtown Lane is surrounded by top-tier restaurants, unique shops, and MTB trails. Amenities include secured parking, keyfob access, and outdoor patio options for every space. Purpose-built to match the energy of downtown Bentonville, Midtown Lane fosters connection, collaboration, and growth. Discover Bentonville's most exclusive office address—where professionals flourish.

Property Details

Lot Size	1.32 Acres
Listed By	Genesis Commercial Real Estate