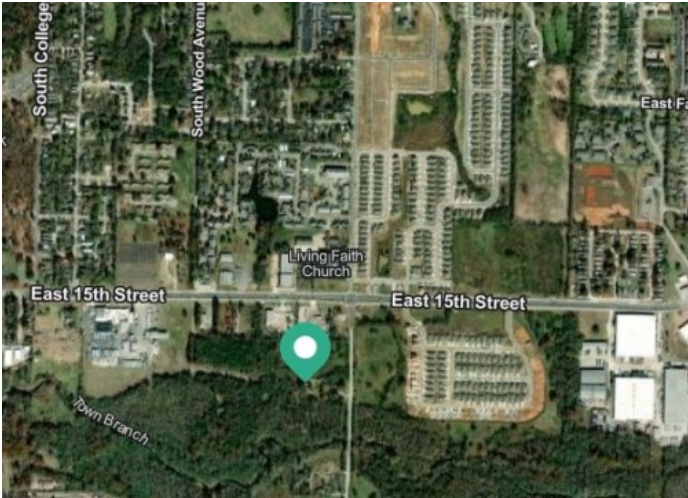


# 1701 & 1693 Morningside Drive

Fayetteville, Ar 72701



**List Price:** \$1,100,000  
**MLS#:** 1304314  
**Beds:** 0  
**Garage:** 0  
**Subdivision:** Fayetteville Outlots  
**Type:** Land  
**County:** Washington  
**School:** Fayetteville

## Description

Offered as Development Potential. 500+ feet of Frontage on S Morningside Dr. Properties are presently zoned R-A with RMF-24 to the North and I-1 to the South. Recently completed Park Meadows single family development is directly East.

## Property Details

Lot Size	8.59 Acres
Fencing	None
Listed By	Coldwell Banker Harris McHaney & Faucette-Bentonvi