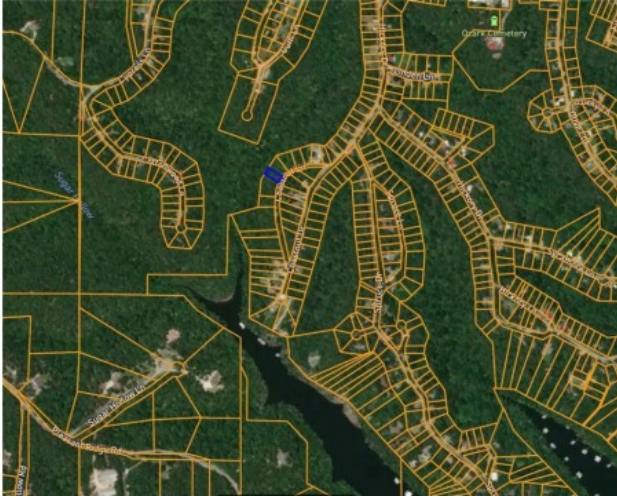


Lot 1006 Chestnut Lane

Rogers, Ar 72756



List Price: \$13,000

MLS#: 1308941

Beds: 0

Garage: 0

Subdivision: Beaver Shores Unit 5 Rurban

Type: Land

County: Benton

School: Rogers

Description

Beaver Lake area lot in the Beaver Shores Subdivision. Very Secluded with a few houses on the street. Prairie Creek Marina and 3 other boat launch ramps located just right around the corner. Minutes to Downtown Rogers. Water and electric at street. Multiple lots available.

Property Details

Lot Size	0.18 Acres
Fencing	None
Listed By	Coldwell Banker Harris McHaney & Faucette -Fayette