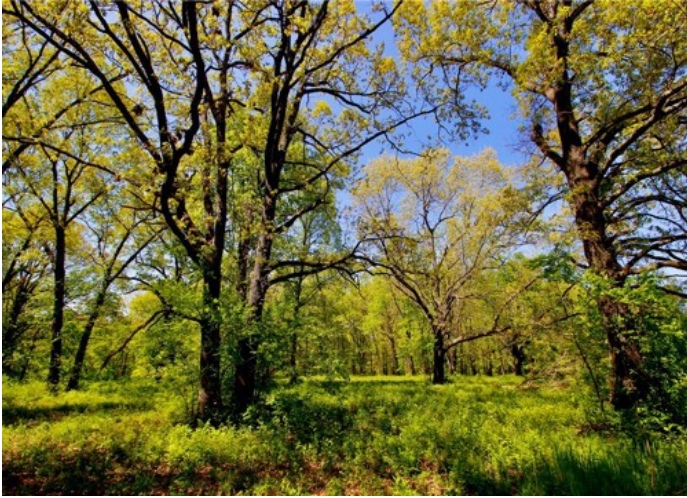


00 Garner Lane

Berryville, Ar 72616



List Price: \$175,000
MLS#: 1338048
Beds: 0
Garage: 0
Subdivision: Berryville Outlots
Type: Land
County: Carroll
School: Berryville

Description

It's all about location and usability—and this exceptional 10+/- acre tract delivers both. Situated inside the city limits of Berryville, this is one of the last remaining large vacant parcels available, offering an incredible opportunity for development or investment. Positioned in a commercial and residential district, the property is just approximately a quarter mile from Walmart and features convenient access just off Highway 62 Spur, providing excellent visibility and accessibility.

The land itself is mostly level and highly usable, making it ideal for a residential development, multi-family project, or a premier private home site. Utilities are readily available, including city sewer, natural gas, city water, and electric—significantly reducing development costs and streamlining the building process. The property is adorned with mature, open timber and grassy areas, including beautiful walnut and oak trees that add character and natural appeal while maintaining flexibil

Property Details

Lot Size	9.00 Acres
Fencing	None
Listed By	Midwest Land Group, LLC