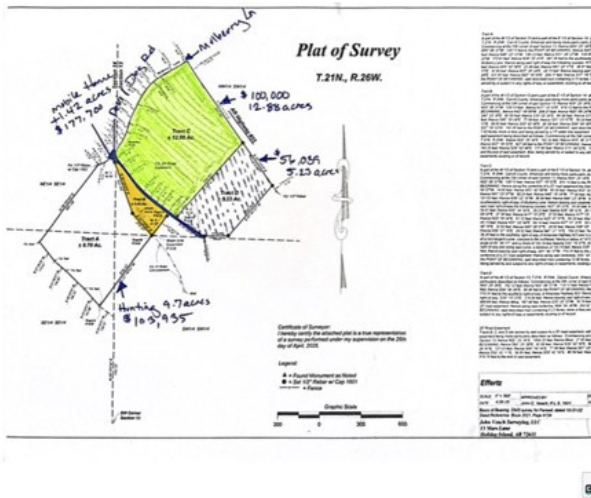


TBD Mulberry Lane

Eureka Springs, Ar 72631



List Price: \$56,039

MLS#: 1345272

Beds: 0

Garage: 0

Type: Land

County: Carroll

School: Eureka Springs

Description

SECOND CHANCE- no fault of seller. 5.23 unrestricted acres with excellent highway frontage and endless possibilities. This mostly flat, usable land is ready for whatever your heart desires — whether that's a homesite, hobby farm, pasture land, commercial venture, development opportunity, or income-producing investment. With no known restrictions, the flexibility here is hard to find. The property offers outstanding visibility along the major highway, creating potential for billboard income, business exposure, or future commercial use. Conveniently located just 15 minutes from Eureka Springs and near the Missouri state line, you'll also enjoy quick access to outdoor recreation including hunting, fishing, hiking, and floating throughout the Ozarks. Adjacent acreage may also be available for purchase, including additional pasture land, wooded hunting acreage, and a mobile home, allowing for expanded opportunities and a larger footprint if desired. See MLS 1340579

Property Details

Lot Size	5.23 Acres
Fencing	None
Listed By	Keller Williams Market Pro Realty Branch Office