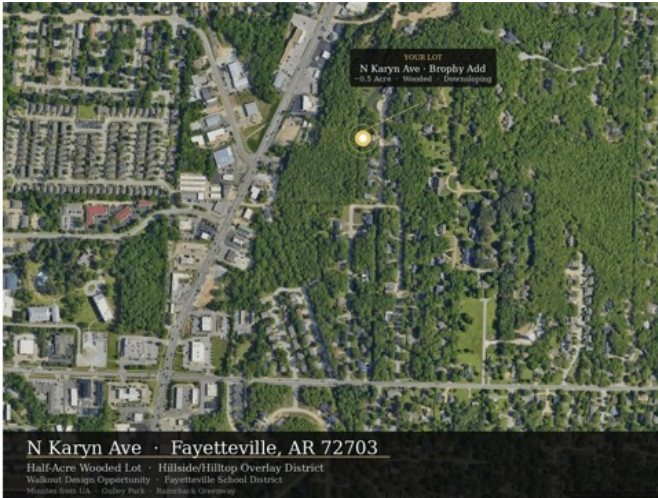


N Karyn Avenue

Fayetteville, Ar 72703



List Price: \$165,000
MLS#: 1351833
Beds: 0
Garage: 0
Subdivision: Brophy Add
Type: Land
County: Washington
School: Fayetteville

Description

Step onto this lot and you're in the trees. This wooded half-acre on N Karyn Ave sits in one of Fayetteville's most established neighborhoods — and within the Hillside/Hilltop Overlay District, where tree canopy preservation is protected by law. That means the privacy and natural character you see today stays that way.

The downsloping grade opens the door to terrain-adaptive design — walkout lower levels, cantilevered decks, covered rear living spaces — the kind of architecture that makes a home feel like it was built for the land it's on.

Walk or bike to Gulley Park and the Razorback Greenway. Minutes from the University of Arkansas, downtown Fayetteville, and the best dining and shopping NWA has to offer. Fayetteville School District — Butterfield Elementary, Woodland Junior High, and Fayetteville High School East.

Lots like this don't come around often. Come walk it.

Property Details

Lot Size	0.50 Acres
Fencing	None
Listed By	The Wanderlust Co.