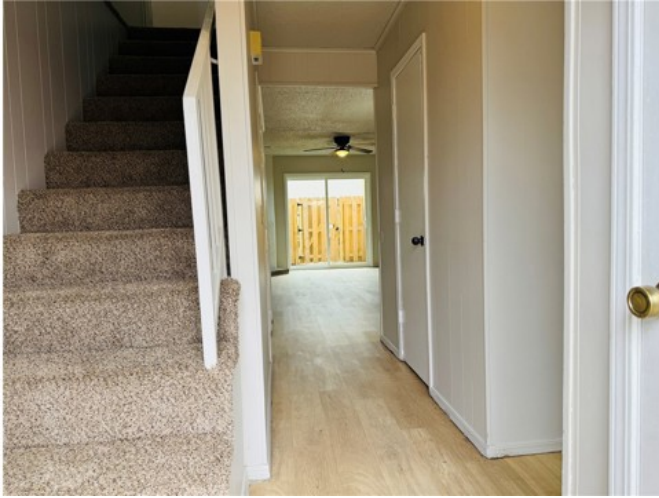


1701 S West End Street 10

Springdale, Ar 72764



List Price: \$1,250

MLS#: 1353686

Beds: 2

Baths Full: 1

1/2 Baths: 1

Garage: 0

Square Feet: 1,080

Price / Square Foot: \$1.16

Subdivision: 2-17-30 SPRINGDALE OUTLOTS

Type: ResidentialLease

Built: 1980

County: Washington

School: Springdale

Description

Spacious 2-bedroom 1.5 bath townhouse in Springdale featuring a large living room and a walk-out fenced patio. Convenient layout with a half bath downstairs and washer/dryer hookups for added ease. Fireplace in living room is covered up and no longer exist. Tenants will have a \$45 water fee charged to tenant account every month. We process applications as we receive and once an application is approved, we reach out for deposit. Deposit secures the unit not the application. Please be aware of scams. Our application process is to be paid online through a secure portal and we do not accept cash, CashApp, Venmo, and/or PayPal. Showings are through appointments only. Tenants responsible for all utilities. Pictures are of like unit - some layout, finishes may vary.

Property Details

Lot Size	0.01 Acres
Air Condition	CentralAir
Amenities	CeilingFans, WindowTreatments
Appliances	Dishwasher,ElectricOven,ElectricRange,Refrigerator
Fencing	None
Fireplace	None
Listed By	Equity Partners Realty